

Brickworld  
products

**Color-**

**Dämm**

**stein®**

# The Color Dämmstein-Grille System

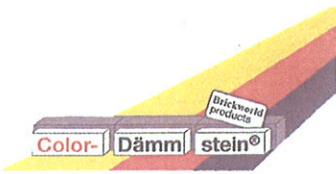


## Walling System

**Class A1 Fire Resistance**

A modern simple way of achieving high insulation standards with fast track low cost construction whilst still sustaining a traditional finish

# Technical Information

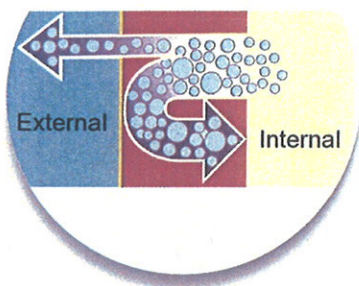


## The Color Dämmstein-Grille System

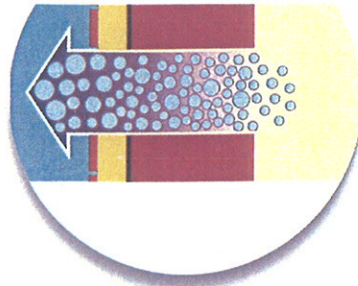
Approved materials are combined in a whole new kind of combination consisting of mineral wool, brick slips and a special adhesive.

The system can easily be designed to achieve any required 'U' value giving extremely high levels of thermal efficiency.

## Diagrams showing permeability comparison



Permeability of water vapour  
**without** Color Dämmstein

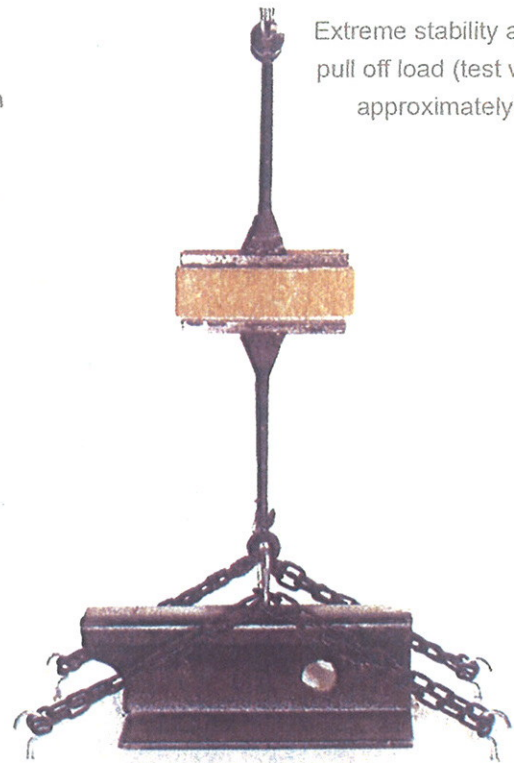


Permeability of water vapour  
**with** Color Dämmstein

## PULL OFF TEST

Water absorption of brick slips <9% to give high frost resistance

Extreme stability at high pull off load (test weight approximately 30Kg)

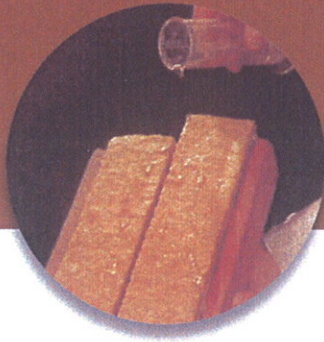


## Further advantages are:

- Waterproof mineral wool
- Vapour permeable construction
- High stability against torsion and bending stresses
- Does not age, retains the shape of masonry material
- Non-flammable building materials Class A1 and no smoke emissions
- No wet inner walls
- Easy to assemble, saves on construction time and costs
- No additional foundations necessary when used for refurbishment
- High insulation to any required 'U' value as result of the grill-system
- A high level of sound proofing, resulting from the layers of different material used
- Exclusive and widely variable choice of brick / masonry colours and textured

# The System at a Glance

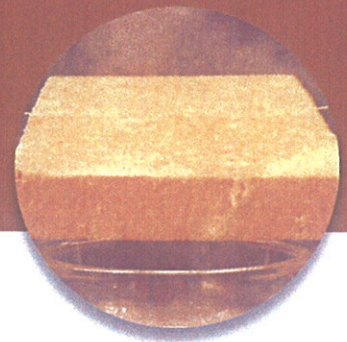
## Mineral Wool



**water repellent**



**non-flammable**



**vapour permeable**

The system provides an insulated facade to any type of building or structure using approved materials to give a traditional finish in a whole new concept.

## Color Dämmstein

### ● Joints

After fixing the system complete with slips, the joint spacing will be automatically formed ready for pointing with mortar. This can be achieved in a variety of ways.

### ● Brick Slips

Chosen brick slips applied to the rock wool.

### ● Corners

External corners (pistols) supplied to suit.

### Brick Slips

These can be chosen from the complete range of masonry materials:

- Clay Bricks hand made / wire cut
- Calcium Silicate Bricks
- Glazed Bricks
- Natural Stone
- Re-constructed Stone

All the above in a wide range of sizes and colours

### ● Mineral Wool

The wire ties increase the level of stability of the system.

### ● Adhesive

System is fixed with a special adhesive or cement based adhesive.

### ● Aluminium starter profile

### Mineral Wool

Special fibre orientation and customised tooling of the face gives a unique layer of insulation.





**New build**



**Refurbishment**



**Color- Dämm stein®**

[www.color-daemmstein.nl](http://www.color-daemmstein.nl)

Melchersstraat 201 6372 KZ Landgraaf Netherlands

Tel.: 0031-(0)-45-5423641 E-mail: [cds@melchersstraat.nl](mailto:cds@melchersstraat.nl)